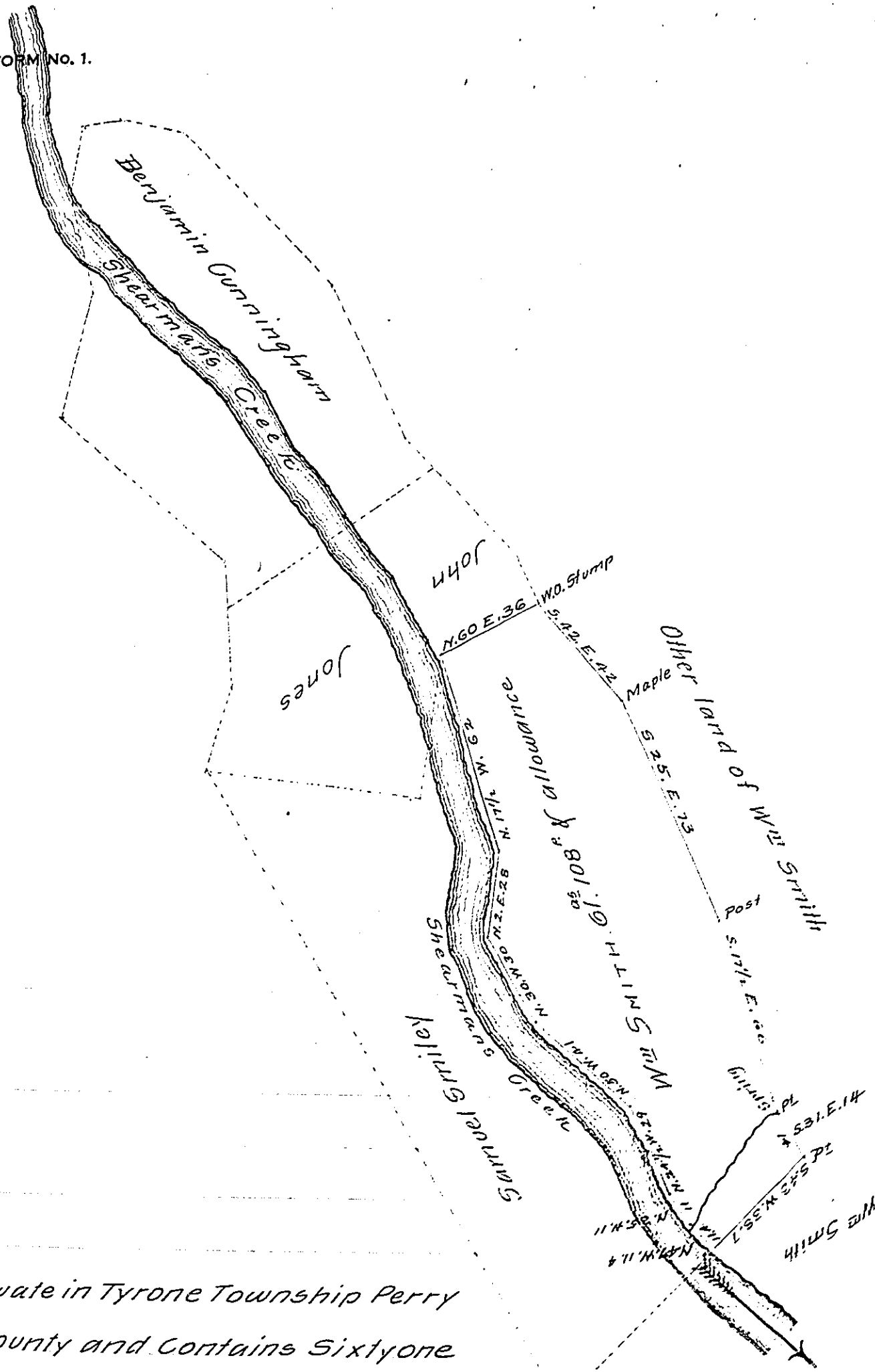


FORM No. 1.



Situate in Tyrone Township Perry
 County and Contains Sixtyone
 acres 108 p. & allowance of six per cent for roads &c. it being part
 of 212^{ac} 149 p. & allowance. Surveyed the 16th day of August 1814 on
 a Warrant granted William Smiley dated February 3^d 1755
 Surveyed the above ^{black} lines April 14th 1827 for W^m Smith to patent.
 pt W^m Wilson D.S.

Gabriel Hiester Esq^r
 Surveyor General of Pa

IN TESTIMONY that the above is a copy of the original remaining on file in
 the Department of Internal Affairs of Pennsylvania, made
 conformably to an Act of Assembly approved the 16th day of
 February 1833, I have hereunto set my hand and caused
 the Seal of said Department to be affixed at Harrisburg,
 this eleventh day of January 1907

Geo. A. Brown
 Secretary of Internal Affairs.